

SHARE-Gateway User Conference, Berlin, Nov. 6-8, 2024

Program

GATEWAY TO
GLOBAL
AGING
DATA

Objective

The conference aims to increase visibility and foster the use of SHARE (Survey of Health, Ageing and Retirement in Europe) data and the broader international network of health and retirement studies supported by the Gateway to Global Aging Data. It will promote discussion between users on research evaluating a range of topics covered in the international network, especially cross-country work on health, ageing, and retirement. Day 1 features workshop sessions on the Harmonized Cognitive Assessment Protocol (HCAP) and the Gateway's cross-study harmonized datasets, and the following two days comprise 6 parallel sessions presenting work by SHARE-Gateway users selected by the scientific committee.

Day 1 (Wednesday, November 6)

Workshop sessions will take place in the Nordbahnhof room (upper floor). Reception will take place in the Foyer. See map on last page.

- | | |
|---------------|--|
| 12:00 – 13:00 | Registration |
| 13:00 – 15:00 | Workshop 1. <i>Gateway Harmonized Data: Cross-Country Analysis in the HRS International Network of Studies</i>
Jenny Wilkens (University of Southern California) |
| 15:00 – 15:30 | Coffee break |
| 15:30 – 17:30 | Workshop 2. <i>Understanding and Using Harmonized Cognitive Assessment Protocol (HCAP) Data</i>
Emma Nichols (University of Southern California)
Alden Gross (Johns Hopkins University) |
| 18:00 – 19:30 | Opening Reception |

Location: [Stellwerk-Nordbahnhof, Schwartzkopffstraße 11, 10115 Berlin, Germany](#)

SHARE-Gateway User Conference, Berlin, Nov. 6-8, 2024

Program

GATEWAY TO
GLOBAL
AGING
DATA

Day 2 (Thursday, November 7)

Introductory remarks through the Opening Plenary session will take place in room A/B. Rooms for each presentation session are indicated next to the session titles in [square brackets]. See map on last page.

- 8:30 – 9:00 Registration
- 9:00 – 9:30 **Introductory remarks:** *Future plans for SHARE and the Gateway*
David Richter (SHARE Berlin Institute) and Jinkook Lee (University of Southern California)
- 9:30 – 10:30 **Opening Plenary:** *Harmonized Cognitive Assessment Protocols: Current progress and future prospects*
Alden Gross (Johns Hopkins University)
- 10:30 – 11:00 Coffee break
- 11:00 – 12:30 **Parallel Sessions 1**

Session 1a: HCAP and its applications [Room A/B]

Chair: Arie Kapteyn (University of Southern California)

1. *Associations between HCAP informant reports and cognitive function in spouse informants: a pooled analysis of HRS, ELSA, and TILDA data*
Joanne Feeney* (TILDA, Trinity College Dublin), Christine McGarrigle (TILDA, Trinity College Dublin)
2. *Cohort profile of the second wave of the Healthy Cognitive Ageing Project of the English Longitudinal Study of Ageing (ELSA-HCAP 2)*
Maria Tsantani* (National Centre for Social Research), Kirsty Bennett (National Centre for Social Research), Shabina Hayat (University College London), Sarah Assaad (University College London), Tom Bristow (National Centre for Social Research), Andrew Steptoe (University College London)
3. *Cross-National Comparisons of the Association of Multilingualism and Education on Cognition Among Older Adults in India, Mexico, and South Africa*
Iris Strangmann* (Columbia University Medical Center), Gutierrez, S. (University of San Francisco), Kunicki, Z. (Brown University), Gelan, Y. (University of Florida), Gonzalez, A. (University of Houston), Weuve, J. (Boston University), Terracciano, A. (Florida State University), Vonk, J.M.J. (University of San Francisco), Briceno, E. (University of Michigan), Arce Rentería, M. (Columbia University Medical Center)

Session 1b: Retirement [Room C]

Chair: Mario Padula (Ca' Foscari University of Venice)

4. *Women caring penalty at retirement in Europe*
Francesco Maura* (Bocconi University), Paola Profeta (Bocconi University)
5. *Working longer or opting out? Women's costly response to a recent pension reform*
Elena Bassoli* (Paris School of Economics), Ylenia Brilli (Ca' Foscari University of Venice)
6. *Occupation-specific health hazards and trajectories to retirement*
Danilo Cavapozzi* (Ca' Foscari University of Venice), Ya Gao (Ca' Foscari University of Venice), Irene Mammi (Ca' Foscari University of Venice)

Location: [Stellwerk-Norbahnhof, Schwartzkopffstraße 11, 10115 Berlin, Germany](#)

12:30 – 14:00 Lunch

14:00 – 15:30 **Parallel Sessions 2**

Session 2b: Financial decisions [Room A]

Chair: Yuri Pettinicchi (SHARE Berlin Institute)

7. *Financial behavior and subjective mortality beliefs in ageing societies: Experimental evidence from a European cohort study*
Michail Chouzouris (University of Piraeus), Anastasia Dimiski* (University of Cyprus), Dionysia Chaidemenaki (University of Piraeus)
8. *Subjective survival beliefs, cognitive skills and investments in risky assets*
Chiara Dal Bianco (University of Padova), Francesco Maura* (Bocconi University), Francesca Parodi (Cattolica University of Milan), Guglielmo Weber (University of Padova)
9. *Cognitive decline and mental health: the effect on household finances*
Greta Pesaresi* (University of Padova)

Session 2c: COVID-19 Pandemic [Room B]

Chair: Melanie Wagner (Austrian Academy of Sciences)

10. *The hidden crisis: classifying unmet healthcare needs in European older adults during COVID-19*
Šime Smolić* (University of Zagreb), Petra Medimurec (University of Zagreb), Ivan Čipin (University of Zagreb), Stipica Mudražija (University of Washington), Dario Mustač (University of Zagreb), Margareta Fabijančić (University of Zagreb)
11. *We are not all in this together: assessing socioeconomic gradients of mortality in Europe before and during the COVID-19 pandemic*
Paola Sillitti* (University of Lausanne), Clément Meier (University of Lausanne), Olivier Mucchiut (University of Lausanne), Ralf J. Jox (Lausanne University Hospital), Jürgen Maurer (University of Lausanne)
12. *Medium-term effects of the COVID-19 pandemic on healthcare utilization in Europe: behaviours or characteristics changes?*
Justine Bondoux* (Université Paris-Dauphine), Louis Arnault (Université Paris-Est Créteil), Florence Jusot (Université Paris-Dauphine)

15:30 – 16:00 Coffee break

16:00 – 17:30

Parallel Sessions 3

Session 3a: Health and wellbeing [Room A]

Chair: Jürgen Maurer (Université de Lausanne)

13. *Prospective bidirectional associations between diabetes and depressive symptoms across European countries: A secondary analysis of ELSA, TILDA, and SHARE datasets*

Jaroslav Gottfried* (University College Dublin), Gráinne Flynn (Thriveabetes), Katarzyna Gajewska (Diabetes Ireland), Ann Hever (TILDA), Belinda Hernández (TILDA), Cathy Lloyd (The Open University), Arie Nouwen (Middlesex University), Shane O'Donnell (University College Dublin), Ricardo Rodrigues (Lisbon School of Economics and Management), Norbert Schmitz (Tubingen University), and Sonya Deschênes (University College Dublin)

14. *Permanent impact or temporary dip? How does wellbeing react to transient and persistent functional disability?*

Bram Vanhoutte* (Université libre de Bruxelles), Thibault Köhler (Université libre de Bruxelles)

15. *Partner loss and economic wellbeing in Europe: is there a difference between gray divorce and widowhood?*

Júlia Cots-Capell (Hertie School), Sarah Schmauk* (Berlin-Brandenburg Academy of Sciences and Humanities), Michaela Kreyenfeld (Hertie School)

Session 3b: New methods and issues in survey measurement [Room B]

Chair: Yuri Pettinicchi (SHARE Berlin Institute)

16. *Accelerometer-measured physical activity and ADL/IADL impairment: a two-year follow-up analysis*

Fabio Franzese* (SHARE Berlin Institute), Chinenye Benjamin (SHARE Berlin Institute)

17. *The role of information in eliciting support for inheritance taxation*

Javier Olivera* (National Bank of Belgium), Erik Schokkaert (KU Leuven), Philippe Van Kerm (University of Luxembourg)

18. *From computer to “modern devices”: A cross-country, cross-survey comparison of questionnaires and evidence on internet use over time*

Johanna Schütz* (Kempten University of Applied Sciences), Kenneth zur Kammer, (Kempten University of Applied Sciences)

19:00

Conference dinner

Location: [Mama Trattoria, Berlin Mitte](#)

Address: [Pariser Platz 6a, 10117 Berlin, Germany](#)

SHARE-Gateway User Conference, Berlin, Nov. 6-8, 2024 Program

GATEWAY TO
GLOBAL
AGING
DATA

Day 3 (Friday, November 8)

Rooms for each presentation session are indicated next to the session titles in [square brackets]. See map on last page.

9:00 – 10:30

Parallel Sessions 4

Session 4a: Long-term care policy [Room A/B]

Chair: Giacomo Pasini (Ca' Foscari University of Venice)

19. *The future of long-term care in Europe. A microsimulation analysis of potential demand and costs based on benefit eligibility rules*

Vincenzo Atella (University of Roma Tor Vergata), Federico Belotti (University of Roma Tor Vergata), Ludovico Carrino (University of Trieste), Andrea Piano Mortari* (University of Roma Tor Vergata)

20. *Left at the margin? The determinants of non-take-up of LTC benefits: evidence from England*

Ludovico Carrino (University of Trieste), David Knapp (University of Southern California), Jeremy McCauley (University of Bristol), Yeeun Lee Yoo (University of Southern California), José Carlos Ortega Regalado* (University of Trieste)

21. *United States long-term care: a comparative analysis of state-level assessment methodologies and their impact on eligibility*

Giacomo Pasini (Ca' Foscari University of Venice), David Knapp (University of Southern California), Heber Dávila* (Ca' Foscari University of Venice)

Session 4b: Family, life experiences, and health [Room C]

Chair: Anne Nolan (The Economic and Social Research Institute, Dublin)

22. *Family social capital and retirees' mental health: is blood really thicker than water?*

Arielle Cohen Tanugi-Carresse* (Université Paris-Est Créteil), Thomas Barnay (Université Paris-Est Créteil), Irene Papanicolas (Brown University)

23. *Can Maternity Leave Explain Distance between Parents and Child Later in Life?*

Elsa Perdrix* (Université Paris Dauphine), Julien Bergeot (Ca' Foscari University of Venice)

24. *The health consequences of spousal bereavement*

Elena Bassoli* (Paris School of Economics), Peter Eibich (Université Paris Dauphine) and Xianhua Zai (Max Planck Institute for Demographic Research)

10:30 – 11:00

Coffee break

11:00 – 12:00

Plenary Session: SHARE Berlin Institute [Room A/B]
David Richter (SHARE Berlin Institute)

12:00 – 13:15

Lunch

Location: [Stellwerk-Norbahnhof, Schwartzkopffstraße 11, 10115 Berlin, Germany](#)

SHARE-Gateway User Conference, Berlin, Nov. 6-8, 2024

Program

GATEWAY TO
GLOBAL
AGING
DATA

13:15 – 14:45

Parallel Sessions 5

Session 5a: Life histories and cohort studies [Room A]

Chair: George Ploubidis (University College London)

25. *Research on ageing using the British cohorts: A focus on the 1958 NCDS and 1970 BCS70 birth cohorts*

Vanessa Moulton (University College London), Dario Moreno Agostino (University College London), George Ploubidis* (University College London)

26. *The generational health drift: evidence from four British birth cohorts*

Laura Gimeno* (University College London), Alice Goisis (University College London), Jennifer Dowd (University College London), George Ploubidis (University College London)

27. *Using harmonized life history data from the Gateway to Global Aging Data Platform*

Morten Wahrendorf* (University Düsseldorf)

28. *Employment and family histories and informal caregiving in later life*

Christian Deindl* (TU Dortmund), Giorgio Di Gessa (University College London), Morten Wahrendorf (University Düsseldorf), Maike van Damme (CED, Universitat Autònoma de Barcelona), Jeroen Spijker (CED, Universitat Autònoma de Barcelona), Rebecca Lacey (St George's, University of London), Baowen Xue (University College London), Markus King (TU Dortmund), Anne McMunn (University College London)

Session 5b: Life expectancy [Room B]

Chair: Šime Smolić (University of Zagreb)

29. *Emotional closeness and life expectancy: cross-country evidence from Europe*

Mohammad Almomani* (Flinders University), Ilke Onur (Flinders University), Rong Zhu (Flinders University)

30. *Career arduousness and [healthy] life expectancy in Europe*

Vincent Vandenberghe* (UCLouvain)

31. *Valuing statistical life using seniors' medical spending*

Jonathan D. Ketcham (Arizona State University), Nicolai V. Kuminoff (Arizona State University), Nirman Saha* (University of Surrey)

14:45 – 15:15

Coffee break

15:15 – 16:45

Parallel Sessions 6

Session 6a: Topics in ageing [Room A]

Chair: Andrej Srakar (Institute for Economic Research, Ljubljana)

32. *Cross-national comparisons of physical and cognitive health with the subjective age in old populations*

Omar Paccagnella (University of Padua)

33. *Including Bouchaud's stochastic aging in modelling retrospective panel data*

Andrej Srakar (Institute for Economic Research, Ljubljana)

Location: [Stellwerk-Norbahnhof, Schwartzkopffstraße 11, 10115 Berlin, Germany](#)

SHARE-Gateway User Conference, Berlin, Nov. 6-8, 2024 Program

GATEWAY TO
GLOBAL
AGING
DATA

Session 6b: Social and Family Networks [Room B]

Chair: Stefan Gruber (SHARE Berlin Institute)

34. *Aging Abroad: Social Integration Among Migrants over 50 in Europe*
Stefan Gruber* (SHARE Berlin Institute), Gregor Sand (SHARE Berlin Institute), Alina Schmitz (TU Dortmund), Claudius Garten (TU Dortmund)
35. *Cross-national comparisons of patterns of intergenerational relations between older parents and adult children: China, South Korea, and the United States*
BoRin Kim* (University of New Hampshire), Ke Li (University of New Hampshire)
36. *Promoting Work Continuity Amid Parental Care: an Evaluation of Korea's Care-giving Leave Reform*
Hae Yeun Park (University of Southern California), Irene Ferrari (Marche Polytechnic University, NETSPAR), Jacek Barszczewski (OECD), David Knapp (University of Southern California), and Giacomo Pasini* (Ca' Foscari University of Venice)

Session 6c: Cross-country comparisons of cognition [Room C]

Chair: Emma Nichols (University of Southern California)

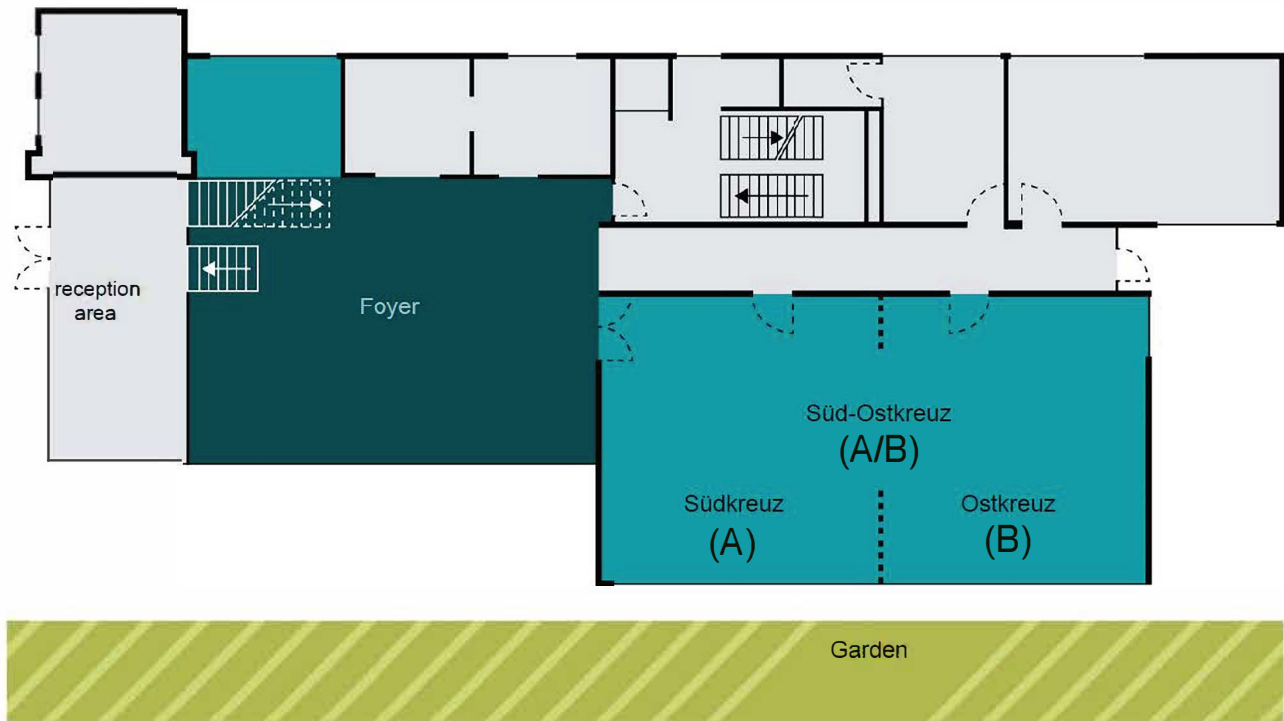
37. *The association between cardiometabolic risk and cognitive function among older Americans and Chinese*
Qiao Wu* (University of Southern California), Jennifer A. Ailshire, (University of Southern California), Jung Ki Kim (University of Southern California), Eileen M. Crimmins (University of Southern California)
38. *Trajectories of episodic memory in midlife: historical change from a cross-country perspective*
Markus Wettstein* (Humboldt University Berlin), Frank J. Infurna (Arizona State University), Nutifafa E. Y. Dey (Arizona State University), Yesenia Cruz-Carrillo (Arizona State University), Kevin J. Grimm (Arizona State University), Margie E. Lachman (Brandeis University), Denis Gerstorf (Humboldt University Berlin)
39. *Impact of mothers' work history on cognitive function: evidence from maternity leave policies*
David Knapp* (University of Southern California), Arie Kapteyn (University of Southern California), Tabasa Ozawa (University of Southern California)

16:45 – 17:00

Closing Words [Room A]

Room Map

Ground floor



Upper floor

